

# NRW Young Scientist Award 2010

The International NRW Research Schools in Germany will award prizes of € 1,500 to nine young scientists for the most outstanding publication in:

**Biotech-Pharma**

*(Drug research, Stem Cells, Nanomedicine, Biotechnology)*

**Cell Dynamics and Disease**

*(Biomedicine, Molecules and Cells)*

**Chemistry**

*(Molecular Sciences and Solid State Materials)*

**Dynamic Intelligent Systems**

*(Computer Science and Embedded Systems)*

**Economics**

*(Microeconomics, Macroeconomics and Econometrics)*

**From Embryo to Old Age**

*(Molecular and Cell Biology, Development and Evolution)*

**Multi-Modal Sensor Systems**

*(2D/3D Exploration, Remote Sensing, SAR, GNSS, TeraHertz Imaging, Data Mining)*

**Neuroscience**

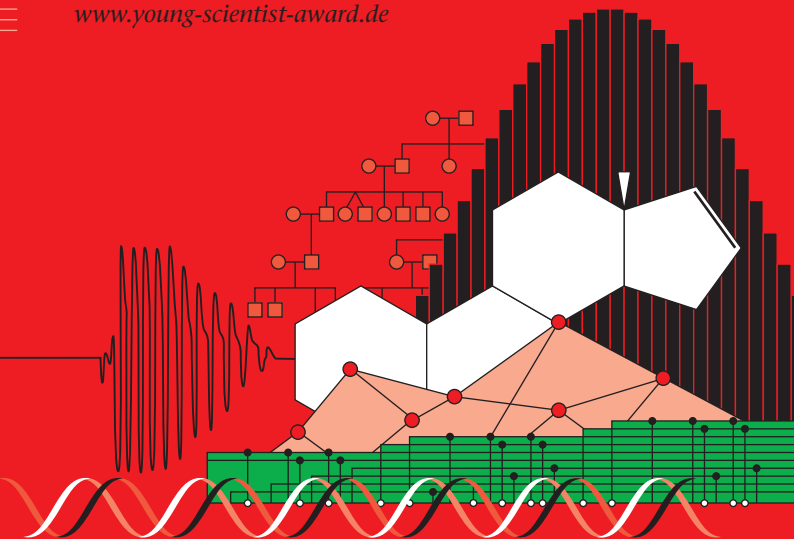
*(Molecular, Developmental, Systems, Cognitive, Clinical, Computational)*

**Structural Biology**

*(Biochemistry, Molecular Medicine, Biophysics, Biotechnology)*

Application Deadline: September 15, 2010

[www.young-scientist-award.de](http://www.young-scientist-award.de)



Numerous federal and industrial research institutions in the Federal State of North Rhine-Westphalia form an outstanding landscape of innovative science and research.

The NRW Research Schools have announced an award for young scientists to foster the early development of research experience and practice. Every NRW Research School awards an annual prize of **1,500 Euro** for an outstanding research paper in the corresponding field of research. Applicants should be (co-)authors of a paper which can be an outstanding publication in a high ranking scientific journal, in proceedings of an international conference, or other publications in the relevant research community. Individual application conditions for each of the NRW Research Schools apply, and they are available in our online portal [www.young-scientist-award.de](http://www.young-scientist-award.de). Applications for the awards can be submitted by the students or faculty advisors to the respective NRW Research School from which the award may be obtained. Along with a copy of the paper or accepted manuscript, the student's curriculum vitae, and a letter from the research advisor or department dean should be included, confirming the major contribution of the applicant to the paper. A copy of the letter of acceptance must also be included, if the paper has not yet been published. More information on the application procedure can be obtained on the website

[www.young-scientist-award.de](http://www.young-scientist-award.de)

The awardees will be invited to receive the prize during an honorary reception at the North Rhine-Westphalian state capital of Düsseldorf.



## NRW International Graduate Research School BIOTECH-PHARMA University of Bonn

[www.biotech-pharma.uni-bonn.de](http://www.biotech-pharma.uni-bonn.de)  
[biotech-pharma@uni-bonn.de](mailto:biotech-pharma@uni-bonn.de)



Biotech-Pharma

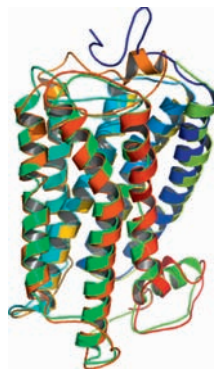


**T**here is a growing need for well-trained young scientists in the interdisciplinary field of drug research.

The educational program of the NRW International Graduate Research School BIOTECH-PHARMA provides the necessary academic courses as well as the research training required for urgently needed young scientists and future leaders in this field.

**A** three-year-PhD-program – especially designed for excellent and highly motivated students – covers all key aspects of drug research and biotechnology.

**T**he focus lies on the identification of drug targets and lead substances (chemicals, biologicals), development of novel biological therapies (like protein-, gene- and cell-based therapies as well as nanotechnology) and drug regulatory affairs. BIOTECH-PHARMA promotes interdisciplinary research and teaching; it is based on a close collaboration of the Faculty of Medicine, the Faculty of Mathematics and Natural Sciences, CAESAR (Center of Advanced European Studies and Research) and the BfArM (Federal Institute for Drugs and Medical Devices).



# International NRW Graduate School Cell Dynamics and Disease University of Münster

[www.cedad.uni-muenster.de](http://www.cedad.uni-muenster.de)  
[cedad@uni-muenster.de](mailto:cedad@uni-muenster.de)

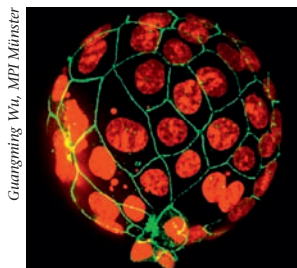
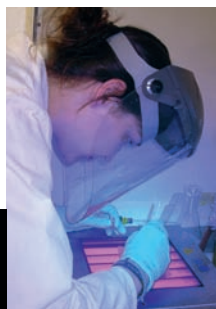


**M**ünster's NRW Graduate School "Cell Dynamics and Disease" (CEDAD) offers cutting edge biomedical

science together with the International Max Planck Research School – Molecular Biomedicine. The joint program fosters integrative approaches to biomedical research comprising Cell and Molecular Biology, Stem Cell Biology, Developmental Biology, Neurobiology, Vascular Biology, Immunology, Microbiology and more.

**C**EDAD's 3-year PhD projects range from studying molecular mechanisms of basic cellular processes to the analysis of the molecular basis of inflammatory and vascular diseases.

**W**e offer outstanding research in 41 high-profile laboratories as well as excellent scientific and "soft-skill" training aimed to strengthen the PhD students' competences for their future careers.



Guangming Wu, MPI Münster



# International NRW Graduate School of Chemistry University of Münster

[www.uni-muenster.de/GSC-MS](http://www.uni-muenster.de/GSC-MS)  
[gsc-ms@uni-muenster.de](mailto:gsc-ms@uni-muenster.de)



**T**he Graduate School of Chemistry at Münster offers a comprehensive programme in inorganic and ana-

lytical chemistry, food chemistry and biochemistry, medicinal chemistry, business management in chemistry, as well as organic and physical chemistry. Scientists from neighbouring disciplines (physics and biology) also contribute to the research infrastructure of the school.

**I**nterdisciplinary collaborations between these fields play a vital part in the research activities. The school comprises ca. 30 world renowned research groups conducting vigorous research projects which are well funded by numerous federal and industrial research institutions.

**T**he GSC-MS provides a three year doctoral programme in chemistry, within the framework of a fertile research environment. This is augmented by an efficient curriculum which covers practical skills to bolster interdisciplinary expertise, and soft skills for a career oriented future.



# International Graduate School of Dynamic Intelligent Systems University of Paderborn

[www.upb.de/graduateschool](http://www.upb.de/graduateschool)  
[graduateschool@uni-paderborn.de](mailto:graduateschool@uni-paderborn.de)

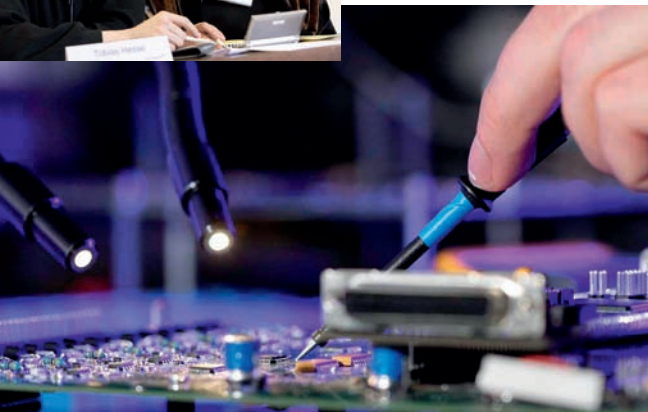


**T**he International NRW Graduate School of Dynamic Intelligent Systems offers a stimulating and supportive

environment in the rapidly developing field of software, systems and network engineering.

**T**he research programme is focussed on challenging topics in the field of embedded or mechatronic systems. These systems only function correctly when the often complex interplay between mechanical, electrical and software components is carefully defined and works well. The construction of these systems is a research focus of the University of Paderborn.

**C**urrently 45 students from 14 countries are working on their PhD at the NRW Graduate School in the fields of Computer Science, Mechanical and Electrical Engineering, Mathematics and Business Computing. We are proud of 57 alumni from 13 countries.



# Ruhr Graduate School in Economics Universities of Bochum, Dortmund, Duisburg-Essen and RWI

[www.rgs-econ.org](http://www.rgs-econ.org)  
[rgs@rwi-essen.de](mailto:rgs@rwi-essen.de)



**T**he Ruhr Graduate School in Economics (RGS Econ) is a joint initiative of the universities of Bochum,

Dortmund, Duisburg-Essen and the RWI, one of Germany's leading economic research institutes. This academic consortium provides an outstanding combination of internationally renowned researchers across economic research fields.

**O**ver a period of three years students receive guidance leading to a PhD in Economics. The excellence of the programme is ensured by well-structured doctoral courses and by a close coaching. The PhD programme provides postgraduate education in all relevant fields of modern Economics, covering theoretical and empirical methods in microeconomics, macroeconomics, econometrics, labor economics, public economics and industrial organisation.

**T**he School's core areas of research can briefly be summarized in three clusters:

*Cluster 1: Applied Microeconometrics, Labour, Population, and Health Economics*

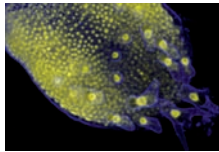
*Cluster 2: Macroeconomics, Monetary and International Economics, Financial Markets*

*Cluster 3: Microeconomics, Game Theory, Mechanism Design and Public Finance*



# International NRW Graduate School From Embryo To Old Age University of Cologne

[www.uni-koeln.de/bio-graduateschool](http://www.uni-koeln.de/bio-graduateschool)  
[bio-gradschool@uni-koeln.de](mailto:bio-gradschool@uni-koeln.de)



**T**he International Graduate School from “From embryo to old age: the cell biology and genetics of health

and disease” (IGS DHD) at the University of Cologne offers a three-year PhD programme in the field of molecular biology.

**T**wenty seven research groups of international reputation participate in the programme. They address a wide range of biological questions, using most of today’s microbial, plant and animal model systems to investigate cell biological and genetical mechanisms whose perturbation during the life cycle of an organism results in disease.

**I**ntensive cooperation across traditional departmental and discipline borders and the commitment to excellence in all aspects of genetic research provide optimal conditions for the individual PhD student. Individual guidance, practical training in hard and soft skills, as well as extensive

support are further hallmarks of the PhD programme – a unique and challenging opportunity in a highly stimulating scientific environment.



# NRW Research School on Multi-Modal Sensor Systems for Environmental Exploration University of Siegen

<http://moses.zess.uni-siegen.de>  
[moses@zess.uni-siegen.de](mailto:moses@zess.uni-siegen.de)

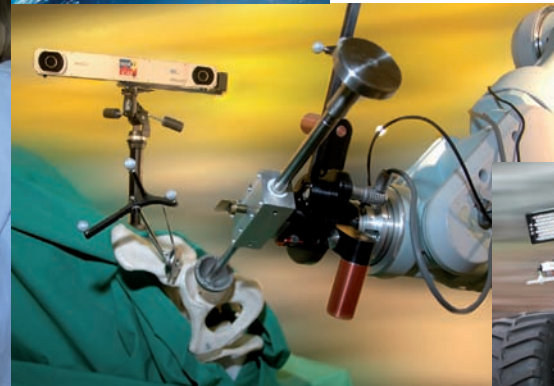


**T**he NRW Research School on Multi-Modal Sensor Systems for Environmental Exploration and Safety (MOSES)

addresses the ever more significant problem of scientifically and technologically exploring and monitoring unknown or changing environments to provide scientists with deeper insights and better understanding of the “System Earth”.

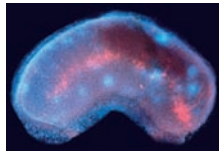
**M**OSES offers a stimulating environment with collaborative embedding in large scale national and international research initiatives and research opportunities in all aspects of sensors, multi sensor systems, data processing, fusion, mining as well as simulation and optimisation of complex sensor systems. Especially remote sensing techniques, 2D/3D imaging, global navigations satellite systems, and sensor networks form key issues of the programme.

**M**OSES constitutes a structured curricular doctoral training and research programme, that qualifies for autonomous scientific work and professional activity in research and development. Participants will be promoted to the German doctoral degree Dr.-Ing. or Dr. rer. nat. within a period of three years.



# BoNeuroMed/International Graduate School of Neuroscience Ruhr-University Bochum

[www.rub.de/igsn/boneuromed](http://www.rub.de/igsn/boneuromed)  
[igsn@rub.de](mailto:igsn@rub.de)

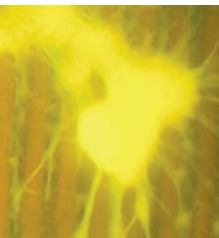


**T**he International Graduate School of Neuroscience (IGSN) and its research centers of excellence offer research

and education opportunities in all aspects of neuroscience from the molecular level to higher cognitive functions. The interdisciplinary nature of the IGSN is represented by the four member faculties of Biology, Chemistry, Medicine; Psychology and the Institute of Neuroinformatics.

**T**he IGSN is truly international: our PhD-students originate from countries such as Canada, Denmark, France, India, Turkey, Switzerland, United States and of course Germany, and their PhD-projects reflect the full spectrum of research areas in neuroscience represented within the IGSN.

**M**ore than 30 research groups contribute to high level, interdisciplinary research including: *cerebral asymmetries, clinical neuropsychology, computational neuroscience, cortical and synaptic plasticity, developmental neuroscience, neurodegenerative diseases, neuron-glia interaction, olfaction, psycho-acoustic, robotics, signal transduction, vision and acting.*



# NRW Research School BioStruct Heinrich-Heine-University Düsseldorf

[www.biostruct.de](http://www.biostruct.de)  
[information@biostruct.de](mailto:information@biostruct.de)

Picture Düsseldorf:  
© J. H. J. Janssen  
& J. H. J. Janssen GmbH

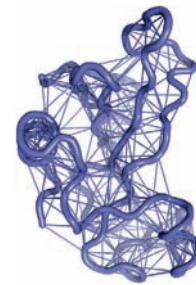
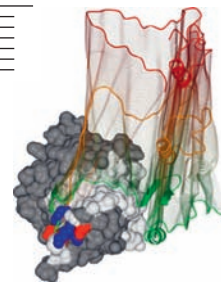


**T**he NRW Research School BioStruct offers innovative

doctoral education and research within a stimulating interdisciplinary environment of internationally renowned research groups applying structural biology to the fields of molecular medicine and biotechnology.

**T**o understand molecular functions and subsequent cellular processes, an enormous range of scientific methods is needed, which is represented at Heinrich-Heine-University (HHU) Düsseldorf and partner institutes at Research Centre Jülich and Max Planck Institute for Bioinorganic Chemistry in a unique width and completeness.

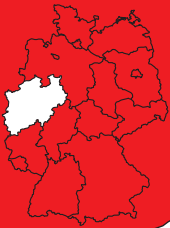
**B**ioStruct introduces this concentrated expertise to a new generation of PhD studies at the HHU Düsseldorf: Outstanding scientific education, scholarships and research funding, structured supervision framework, as well as training in transferable skills and individual support are keystones of the BioStruct PhD program.



*The NRW Research Schools were founded as an initiative of the German Federal State of North Rhine-Westphalia (NRW). International networks of renowned scientists, world leading supervisors and excellent scientific environments – the NRW Research Schools provide a forum for PhD candidates with superior academic track records.*



*This initiative is partially funded by the Ministry of Innovation, Science, Research and Technology of the Federal State of North Rhine-Westphalia*



*German Federal State of North Rhine-Westphalia (NRW)*

